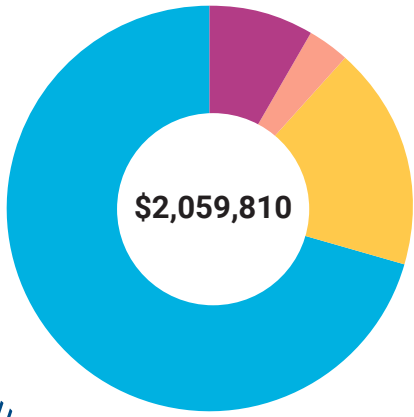


OPERATING REVENUE



Corporate / Foundations
\$1,447,773



Government Funding
\$370,055



Individual Donors
\$175,520



Interest
\$66,462

OPERATING EXPENSES



Programs
\$1,498,879



Administration
\$560,561

\$2,059,440



TOTAL LOANS DISBURSED SINCE INCEPTION

\$2.78M

LOANS SINCE
INCEPTION

650

RISE LOANS

92 F22 loans
disbursed

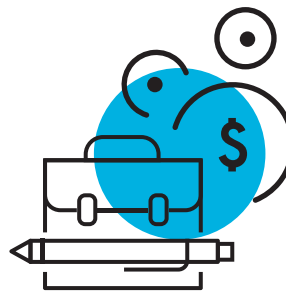
278 F22 active
loans

88% F22 loan
repayment rate



673

F22 TRAINING
PROGRAM
PARTICIPANTS



F22 YEAR-END
LOAN PORTFOLIO

\$875K